

# BEST PROBLEMS

## Rassegna dei migliori problemi

diretta da **Antonio Garofalo**

Col sostegno dell'API (Associazione Problemistica Italiana)

Anno XXIX- n. 113

1°/2025 - January

**Hanno collaborato a questo numero:**

Awani Kumar

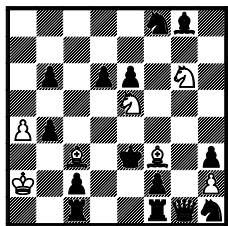
### EDITORIALE

Da questo anno 2025 gli inediti di Best Problems saranno pubblicati in un singolo file pdf, il quale sarà aggiornato ogni volta che mi giungeranno nuovi inediti.

Prego vedere: [http://www.bestproblems.it/bppdf/Originals\\_2025.pdf](http://www.bestproblems.it/bppdf/Originals_2025.pdf)

[From this year 2025 the Best Problems originals will be published in a single PDF file, which will be updated every time new originals will come to me.

Please see: [http://www.bestproblems.it/bppdf/Originals\\_2025.pdf](http://www.bestproblems.it/bppdf/Originals_2025.pdf)]



#### ← Francesco Simoni

1° Premio - 9° T.T. Fédération Royale Marocaine des Echecs 2023

5nb1/8/1p1pp1N1/4N3/Pp6/2B1kB1p/K1p2p1P/2r2rq

H≠2 (7+14) C+

b) -♘e5, c) ♙g8-e1, d)=c) -♙c3

a) 1. dxe5 ♘h4 2. ♙f4 ♙d2‡

b) 1. ♙xf3 ♙e5 2. ♙g2 ♘h4‡

c) 1. bxc3 ♘f4 2. ♙d2 ♘c4‡

d) 1. ♙d4 ♘xf8 2. ♙c5 ♘xe6‡

Comments by Author:

A W unit (♘e5) is captured at B1 in a). The same is removed to have the twin b). A different W unit (♙c3) is captured at B1 in c) and it is removed to have d).

HOTF in twin form.

• In a) c) there is the ZILAH theme, with distant blocks at B1.

• In b) d) the self-blocks are no longer possible, but the ♙e3 can move twice since a W controller has been removed.

#### I concorsi su *Best Problems*:

• ≠2/=2, (2025-2026): NN

• ≠3/=3, (2024-2025): Antonio Garofalo

• S≠2/3-S=2/3 (2024-2025): Antonio Garofalo

• H≠2/H=2, (2024-2025): NN

• H≠2,5/3-H=2,5/3, (2024-2025): NN

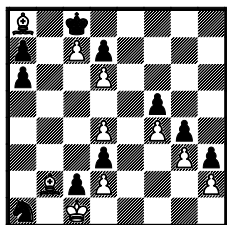
• H≠n/H=n, (2024-2025): Antonio Garofalo

• HelpSelfmate 2/3/n (Orthodox and fairy)  
2024-2025: Antonio Garofalo

• Fairies (2025): NN

E-mail & web site: [perseus@bestproblems.it](mailto:perseus@bestproblems.it) <http://www.bestproblems.it>

## Italian Award Winners



### ← Daniele Gatti

2° Premio - János Csák-75 JT (CSMP-2024)

B1k5/p1Pp4/p2P4/5p2/3P1Pp1/3p2Pp/1BpP3P/n1K5

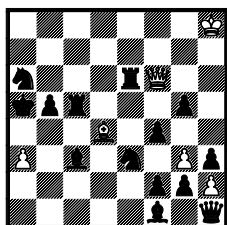
S≠9 (10+10) C+

1. ♖h1 a5 2. ♙a8 a4 3. ♙h1 a3 4. ♙c3 a2 5. ♙b2 a6 6. ♙a8 a5 7. ♙h1 a4  
8. ♙a8 a3 9. ♙c3 ♜b3‡

Comments by Author:

All other variations are only permutations (let alone for shorter mates). Whenever Black plays ... a3, White must play Bc3 (pawn a3 controls b2 and still allows Sb3#). When a3 pawn is pushed to a2, White must play Bb2 to selfblock again that square.

Other pawn moves are answered by continuous switchbacks from a8-h1, until Black runs out of moves. Thematic content: Switchbacks (the longest possible and the shortest possible)



### ← Francesco Simoni

3° Premio - 265° T.T. SuperProblem 2022

7K/8/n3rQ2/kpr3p1/3B1p2/P1b1n1Pp/5ppP/5b1q

H≠2 (6+14) C+ b) ♜a5-g1

a)

1. ♖c4 ♜xc6 2. ♖a4 ♜b6‡ (♙b6‡?)

1. ♖e4 ♙xc5 2. ♖a4 ♙b6‡ (♜b6‡?)

b)

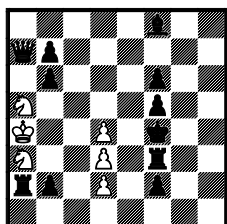
1. ♜g4 ♜xf4 2. ♜xh2 ♜xf2‡ (♙xf2‡?)

1. fxg3 ♙xe3 2. gxh2 ♙xf2‡ (♜xf2‡?)

Comments by Author:

The pieces of a white half-pin defend each other in the mating moves. One of two black units, in turn, moves twice: at B1 to open a gate to one of the half-pinned pieces, and then, at B2, to self-block.

The second half-pinned white piece, in turn, captures the other black unit at W1 to guard the mating square and then to mate.



### ← Francesco Simoni

1ª Menzione Onorevole - SuperProblem 2023

5b2/qp6/1p3p2/N4p2/K2P1k2/N2P1r2/rp1P1p2/8

H≠4 (6+11) C+

1. ♙b4 ♙b5 (♜b3?) 2. ♙xd2 ♜b3 3. ♙e3 ♜c1 4. f4 (♜f4?) ♜c2‡

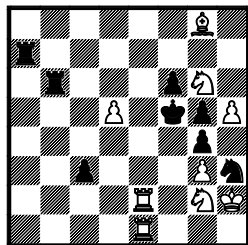
1. ♙c5 ♙b3 (♜b5?) 2. ♙xd4 ♜b5 3. ♙e5 ♜c7 4. ♜f4 (f4?) ♜c4‡

Comments by Author:

A black unit moves twice to selfblock a distant square. The capture of a white unit at B2 allows the bK to move at B3 and specifies the order of black moves.

Indirect white self-unpin with dual avoidance (in his move, the white king must not prevent the next move by the unpinned knight. Model mates.

# Ricostruzione



← **Antonio Garofalo** (Ricostruzione 101, BP112)

Sinfonie Scacchistiche 1977 (v)

6B1/r7/1r3pN1/3P1kpP/6p1/2p3Pn/4R1NK/4R3

≠2 (9+8) C+

1. ♖e7? [2. ♘e3♯] ma 1... ♖a2!

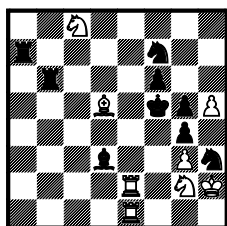
1. ♖e6? [2. ♘e3♯] ma 1... ♖b2!

1. ♖e8! [2. ♘e3♯]

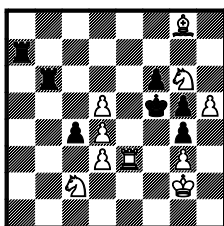
1... ♖b2, ♖e6 2. ♙(x)e6♯

1... ♖a2, ♖e7 2. ♘(x)e7♯

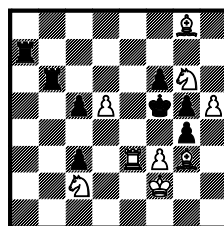
**Predrag Zuvic**



**Valeriu Giurcean**



**Hans Nieuwhart**



Solo 3 partecipanti a questa Ricostruzione. L'amico Miguel Uriz è deceduto improvvisamente e José Antonio Coello Alonso non mi ha inviato la sua proposta.

Zuvic ha leggermente migliorato l'economia della posizione (8+9 invece di 9+8 del mio lavoro) mentre Giurcean ha proposto un tentativo in più: 1. ♖e4? [2. ♘e3♯] 1... ♖b2 2. ♙e6♯ 1... ♖a2 2. ♘e7♯ ma 1... cxd3! Anche Nieuwhart ha aggiunto un tentativo generico: 1. ♖~? [2. ♘e3♯] ma 1... gxf3!

**Ricostruzione n. 102** - Ricostruire un problema ≠2 che abbia la seguente soluzione:

1. ♖d7! [2. ♖xd5♯]

1... ♘xc3 2. ♜xc3♯ 1... ♘xe3 2. ♜xe3♯ 1... ♘b4 2. ♘xc4♯ 1... ♘f4 2. exf4♯ 1... ♘b6 2. ♙d4♯

1... ♘f6 2. ♖xf5♯ 1... ♘c7 2. ♙d6♯ 1... ♘xe7 2. ♖xe7♯ 1... bxc6 2. ♘xc6♯

Inviare (send to): [perseus@bestproblems.it](mailto:perseus@bestproblems.it)

(last available day for to send: 10/03/2025)

A. Garofalo





Awani Kumar, Lucknow, India

Enjoy! Rejoice!! Celebrate!!!

Let us celebrate and commemorate the New Year 2025 with some interesting tours of knight on 20x25 board. Readers of *Best Problems* are well aware of the millennium old ‘Tour of knight’ puzzle. The task is to move a knight over an empty board so that it visits all the cells only once. Figure 1 is a semi-magic tour of knight on 20x25 board. Here all the consecutive numbers from 1 to 500 are at knight’s move and sum of all the move numbers in each row is 5010. Column sums are odd and even alternately, so can't be magic. It is an open tour and readers are urged to look for more challenging closed (or reentrant) semi-magic tour.

5	246	487	264	3	248	489	262	1	250	491	260	239	12	493	258	237	14	495	256	5010
486	265	4	247	488	263	2	249	490	261	240	11	492	259	238	13	494	257	236	15	5010
245	6	267	484	243	8	269	482	241	10	251	500	19	232	253	498	17	234	255	496	5010
266	485	244	7	268	483	242	9	270	481	20	231	252	499	18	233	254	497	16	235	5010
463	226	37	274	465	228	35	272	21	230	479	282	23	284	477	214	25	288	475	212	5010
38	275	464	227	36	273	466	229	480	271	22	219	478	217	24	287	476	213	26	289	5010
225	462	277	40	223	34	279	468	221	32	281	470	283	30	285	472	215	28	211	474	5010
276	39	224	461	278	467	222	33	280	469	220	31	218	471	216	29	286	473	290	27	5010
459	302	41	200	45	300	455	202	47	298	453	204	49	296	451	206	51	292	449	210	5010
42	199	460	301	456	201	46	299	454	203	48	297	452	205	50	295	450	209	52	291	5010
303	458	197	44	305	60	195	442	307	58	193	444	309	56	191	446	207	54	293	448	5010
198	43	304	457	196	441	306	59	194	443	308	57	192	445	310	55	294	447	208	53	5010
69	428	71	434	75	426	61	440	423	78	173	328	311	190	325	176	317	180	323	182	5010
72	431	68	427	66	435	424	77	62	439	312	189	174	327	316	185	324	183	320	179	5010
429	70	433	74	425	76	437	64	79	422	329	172	187	314	175	326	177	318	181	322	5010
432	73	430	67	436	65	80	421	438	63	188	313	330	171	186	315	184	321	178	319	5010
405	92	407	98	411	90	413	168	81	332	419	170	83	338	161	340	153	344	159	346	5010
408	95	404	91	402	99	88	333	420	169	82	331	418	163	152	349	160	347	156	343	5010
93	406	97	410	89	412	167	414	335	86	165	416	337	84	339	162	341	154	345	158	5010
96	409	94	403	100	401	334	87	166	415	336	85	164	417	350	151	348	157	342	155	5010
385	102	121	116	383	108	123	378	399	392	353	356	351	150	145	368	133	138	143	366	5010
114	117	384	101	122	379	400	391	124	377	126	373	354	369	360	139	144	367	132	137	5010
103	386	115	120	107	382	109	398	393	396	355	352	357	146	149	134	361	140	365	142	5010
118	113	388	105	380	111	390	395	376	125	372	127	374	359	370	129	148	363	136	131	5010
387	104	119	112	389	106	381	110	397	394	375	358	371	128	147	362	135	130	141	364	5010

Fig.1. Semi-magic tour of knight on 20x25 board.

‘Figured tour’ is a rich field for mathematical art on chessboard. Figure 2a is monogram tour (knight moves delineating letters). Here the consecutive numbers from 1 to 500 are in knight’s path and line joining all the square numbers  $1^2, 2^2, 3^2, \dots, 22^2$ , namely, 1, 4, 9, ..., 484 delineate letters ‘H’, ‘N’ and ‘Y’, the first letters of Happy New Year. Figure 2b has square numbers delineating number 25 (which correlates with the year 2025). Readers may like to compose other letters and numbers related to the New Year 2025

93	90	87	126	111	128	113	132	139	130	115	134	163	150	117	176	161	152	159	156
88	109	92	95	86	125	140	129	114	133	164	149	116	175	162	151	158	155	178	153
91	94	89	110	127	112	85	124	131	138	135	166	185	118	183	188	177	160	157	180
108	43	106	33	96	45	104	141	136	165	148	119	174	187	198	193	182	179	154	191
29	32	41	44	105	34	97	84	123	142	137	186	167	184	327	332	189	192	181	330
42	107	30	27	40	37	46	103	98	147	120	173	326	199	194	197	328	331	190	437
31	28	3	24	35	26	39	122	83	172	143	200	145	168	333	488	195	438	329	486
6	23	10	1	38	47	36	99	102	121	146	169	334	325	196	439	484	487	436	359
11	2	7	4	35	16	43	82	171	100	289	144	201	362	401	324	489	360	485	482
22	5	12	9	48	61	64	101	288	81	170	225	290	335	440	361	480	483	358	435
13	8	53	62	15	50	17	80	227	224	285	202	363	402	323	400	433	490	481	478
54	21	14	51	18	63	60	65	284	287	226	291	322	399	336	441	476	479	434	357
69	52	19	58	77	66	79	228	223	292	203	286	337	364	403	256	491	432	477	500
20	55	70	67	206	59	222	283	204	317	338	321	398	495	442	475	470	257	356	431
71	68	57	76	221	78	205	316	229	320	293	406	365	404	471	496	255	492	499	258
56	75	220	207	280	315	230	295	282	339	318	397	466	443	494	469	474	497	430	355
219	72	209	298	231	296	281	314	319	294	407	366	405	472	467	462	493	254	259	498
210	233	74	279	208	313	370	379	340	367	396	465	444	463	456	473	468	461	354	429
73	218	299	232	297	376	341	368	371	380	445	408	449	454	459	420	457	422	253	260
234	211	278	217	306	369	312	375	378	395	448	453	464	419	450	455	460	353	428	423
277	240	305	300	303	342	377	372	381	446	409	392	415	452	413	458	421	252	261	352
212	235	302	307	216	311	374	383	394	391	416	447	410	389	418	451	412	265	424	427
241	276	239	304	301	308	343	310	373	382	393	390	417	414	411	388	251	426	351	262
236	213	274	243	238	215	272	245	384	345	270	247	386	347	268	249	264	349	266	425
275	242	237	214	273	244	309	344	271	246	385	346	269	248	387	348	267	250	263	350

(a)

43	56	73	60	303	182	75	184	301	180	335	186	299	178	333	188	297	176	329	190
72	59	44	57	74	315	302	181	76	185	300	179	334	187	298	177	332	189	296	175
55	42	71	304	61	318	183	314	381	336	351	376	385	374	353	366	355	328	191	330
308	305	58	45	70	313	316	77	350	321	384	373	352	365	386	357	254	331	174	295
41	54	307	312	317	62	319	382	337	380	377	322	375	372	367	354	327	356	253	192
306	309	52	69	46	311	78	349	320	383	390	379	370	323	364	387	358	255	294	173
53	40	3	310	51	68	63	338	391	378	395	398	447	388	371	368	363	326	193	252
6	13	38	1	4	47	50	79	348	449	446	389	396	369	324	362	256	359	172	293
39	2	5	48	37	64	67	392	339	394	397	448	399	476	441	290	325	362	251	194
14	7	12	65	124	49	80	347	450	445	490	473	442	483	400	477	360	257	292	171
11	26	17	36	91	66	123	340	393	472	443	482	475	440	289	484	291	250	195	258
18	15	8	23	122	125	346	451	444	491	474	489	480	485	478	401	186	259	170	249
23	10	27	16	35	82	341	492	471	498	481	466	143	488	439	288	169	248	197	260
28	19	24	9	100	121	126	345	452	493	468	499	486	479	144	225	402	287	168	247
31	22	29	34	83	128	453	342	497	470	465	142	467	500	487	438	277	224	261	198
20	85	32	99	120	101	344	127	462	141	494	469	464	145	226	403	286	279	246	167
97	30	21	84	33	454	129	456	343	496	463	146	227	430	437	278	223	276	199	262
86	105	98	119	102	149	232	461	140	147	458	495	428	421	404	283	280	285	166	245
107	96	103	150	233	130	455	148	457	460	427	228	431	436	429	222	275	282	263	200
104	87	106	131	118	231	234	139	416	229	432	459	420	405	422	281	284	271	244	165
95	108	151	116	235	138	215	230	433	426	419	412	435	424	221	272	267	274	201	264
88	115	132	137	152	117	236	417	216	415	434	425	410	413	406	423	270	265	164	243
109	94	111	114	91	210	135	214	237	418	411	414	407	220	409	266	273	268	161	202
112	89	92	133	136	153	212	217	208	155	238	219	206	157	240	269	204	159	242	163
93	110	113	90	211	134	209	154	213	218	207	156	239	408	205	158	241	162	203	160

(b)

Fig.2. Figured tours (a) delineating letters ‘H’, ‘N’, ‘Y’ and (b) number ‘25’.

The author wishes a very **Happy New Year 2025**. May it bring health, wealth and happiness to all. Amen.